

# **Supporting Students in a Shifting Federal Landscape**

**DVCRA  
April 25, 2025**

**Kelly Schelin  
Executive Vice Chancellor, Education & Technology**

# Comprehensive Support Services



## Student Success

Counseling, Educational Planning, and Tutoring



## Financial Aid and Basic Needs

FAFSA help, financial aid, Food pantries,



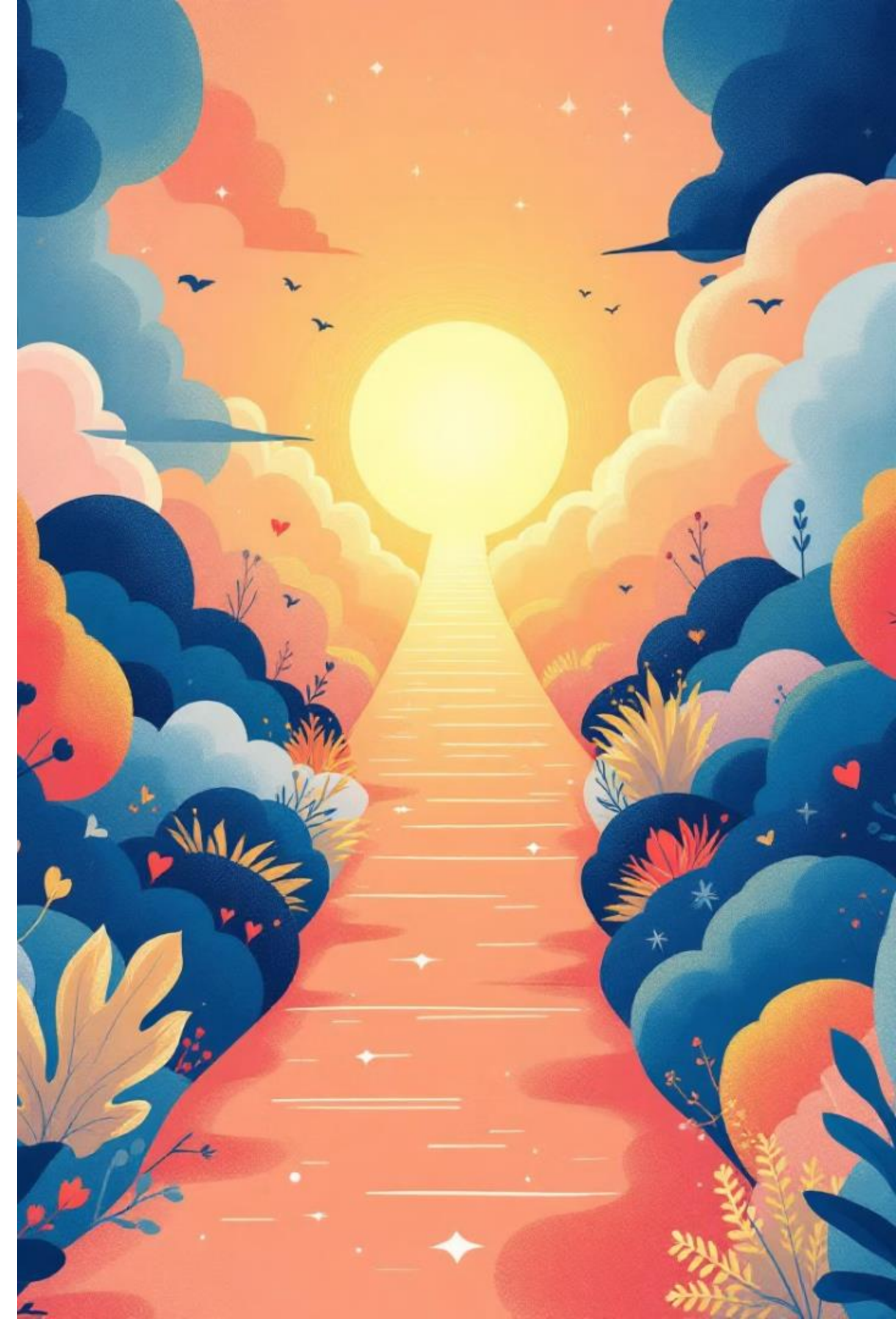
## Mental Health Services

Free mental health counseling for students



## Resource Centers

Dedicated spaces for specific student populations





# Dedicated Resources for Immigrant and Dreamer Students

## Safe Spaces

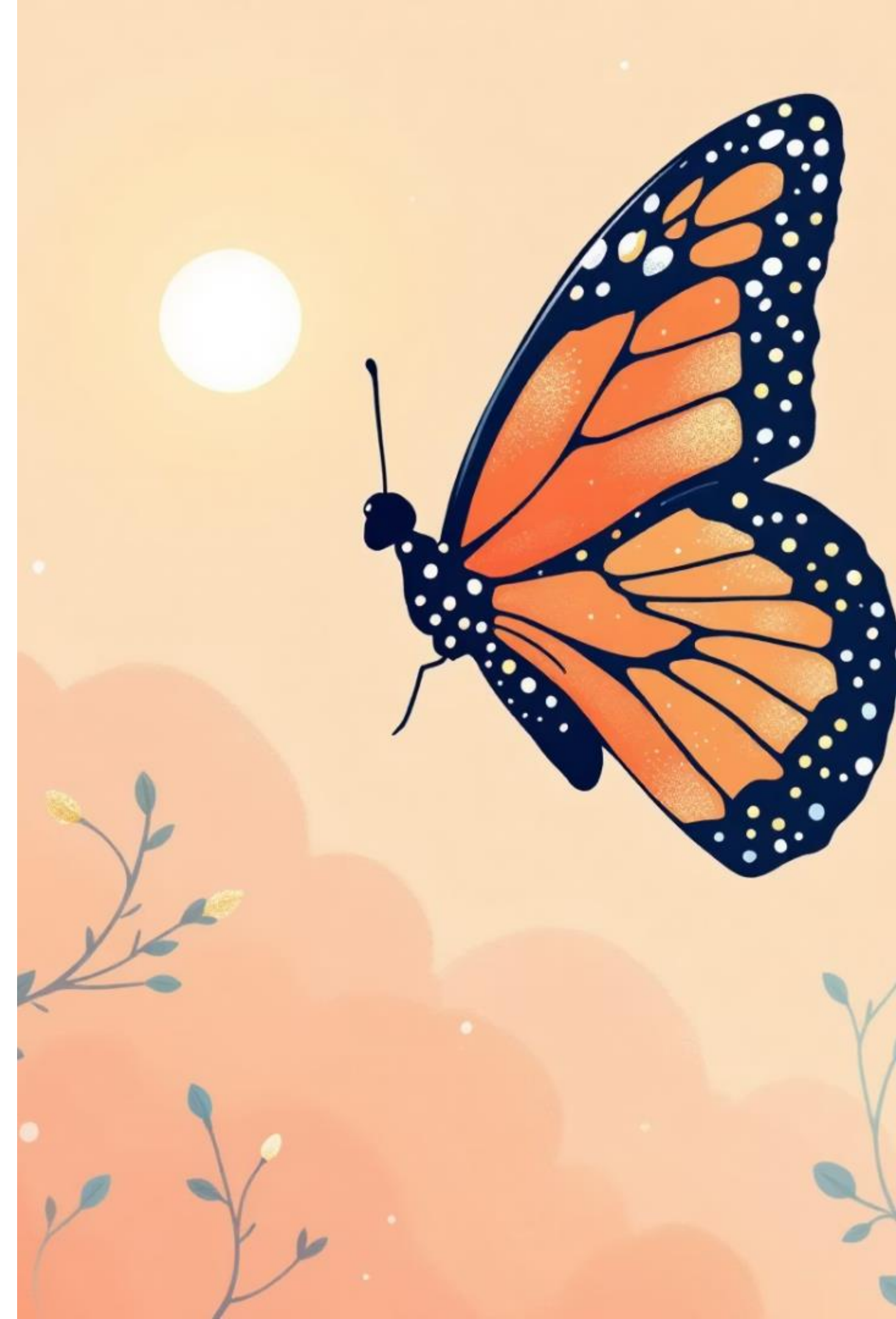
[Safe spaces](#) providing [legal resources](#), peer support, and [community building](#).

## AB 540 Assistance

[Guidance for students](#) to qualify for in-state tuition rates and financial aid.

## Know Your Rights

Workshops on DACA updates, immigration law, and legal protections for immigrant students.



# Guidance for Students

1

## "Know Your Rights" [Red Cards](#)

These red cards are in different languages.

2

## Free Legal Advice Referral

Students are encouraged to seek legal advice early.

3

## On-Campus Point of Contact

Campus Police is the point of contact for support.

AB 21 and SB 54 prohibit law enforcement agencies, including campus police forces, from using resources to support immigration enforcement.

4

## Mental Health Support

Free 24/7 online mental health services are available.

You have constitutional rights:

- **DO NOT OPEN THE DOOR** if an immigration agent is knocking. If you are inside of your house, show the card through the window or slide it under the door.
- **DO NOT ANSWER ANY QUESTIONS** from an immigration agent if they try to talk to you. You have the right to remain silent.
- **DO NOT SIGN ANYTHING** without first speaking to a lawyer. You have the right to speak with a lawyer.
- If you are outside of your house, **SHOW THIS CARD TO THE AGENT**. Ask the agent if you are free to leave and if they say you can, leave calmly.



[www.RedCardOrders.com](http://www.RedCardOrders.com)

# Welcoming and Affirming LGBTQ+ Students

## Safe Spaces

Safe spaces for community building and support. Gender-neutral restrooms.



## Safe Zone Training

Equipping faculty and staff with inclusive practices



## Affirmed Name

Update Affirmed Name for identity recognition



## Community of Pride

Learning community with courses, field trips, social events, workshops, counseling, and mentorship



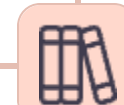
# Empowering International Students

## Application

Centralized and Simplified Application Process.

## Learning

Academic Success Support and Educational Planning



## Onboarding

International Student Orientation and Cultural Adjustment

## Student Support

Legal Service Referral and Mental Health Support